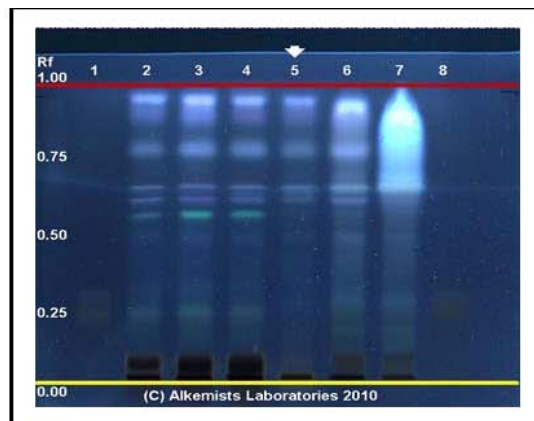
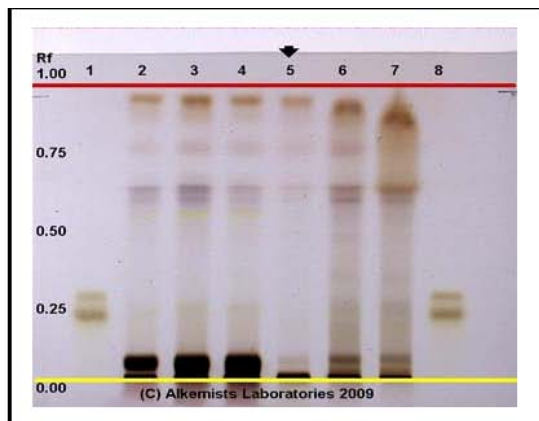


Certificate Issued To:  
**Marlia Business, S.A.**  
**De la Torre Capital Plaza**  
**Panama**



Work performed at:  
**Alkemists Laboratories**  
1260 Logan Ave B2  
Costa Mesa, CA 92626  
714-754-HERB (4372)  
714-668-9972 (FAX)  
E-mail: info@alkemist.com  
Web Site: www.alkemist.com

**Certificate of Analysis: "Pure Acai Berry" (#2)**  
**High Performance Thin-Layer Chromatography with Photo-Documentation 1 2**



Company Name: Marlia Business, S.A.  
Title: "Pure Acai Berry"  
Plant Part: fruit  
Sample Received: 5/27/2010  
Sample Description: 90 capsules in a labeled box  
Form of Botanical: powdered extract  
Appearance: capsules (berry)  
Source/Location: na/na  
Lot #: (#2) → Lane 5(3µl)  
Sample #: AAV14710INCU  
Latin Name: Euterpe oleracea  
Reference Sample #: Lanes 2(2µl), 3(4µl) (AKP10609ERF1) Aristotelia chilensis (fruit); Lane 6(3µl) (AAV07509MRH) Euterpe oleracea (fruit); Lane 7(3µl) (AAV33808ACAI) Euterpe oleracea (fruit) authenticated by macroscopic, microscopic &/or TLC studies according to the reference source cited below, held at Alkemists Pharmaceuticals, Costa Mesa, CA.  
Analyst: B. Fine & SS Sudberg 13595  
Sample Prep: 0.3 g + 3 ml CH<sub>3</sub>OH sonicate/heat @ 50° C ~ 1/2 hr.  
Stationary Phase: Silica gel 60, F<sub>254</sub>, 10x 10 cm HPTLC plates  
Mobile Phase: acetone: toluene: HCOOH [5/4/1]  
Detection: (1) 10% Methanolic H<sub>2</sub>SO<sub>4</sub> → 115° C 15 min → visible light  
(2) 10% Methanolic H<sub>2</sub>SO<sub>4</sub> → 115° C 15 min → UV 365 nm  
Reference Std: Lanes 1(2µl) and 8(2µl) Ascorbic acid (111020-255, Chromadex) ~0.1% in CH<sub>3</sub>OH  
Reference Source: Method Developed by Alkemists Pharmaceuticals  
SOP-700-0001-R3

**Comments & Conclusions:** Yellow line = sample origin @ 10mm, red line = solvent front @ 70mm. Lane 5 is the test sample "Pure Acai Berry" (#2). Lanes 2, 3, 6, 7 are the authenticated reference samples used for comparison. **This test sample, "Pure Acai Berry" (#2), is consistent with the chromatographic profile of the reference samples of Euterpe oleracea used above. This test sample, "Pure Acai Berry" (#2) is characteristic of an extract derived from Euterpe oleracea fruit.**

Dr. Sidney Sudberg,  
X[1] [L] [A] [V] [M] [R] [H]

Digitally signed by Sidney Sudberg  
DN: c=US, o=Alkemists  
Pharmaceuticals,  
location=Costa Mesa, CA,  
date=2010.06.14 12:41:52 -0700

Examined, Reviewed & Authorized by: Sidney Sudberg, Director, Alkemists Labs

Report Date: 6/2/2010

Note: Any unidentified lanes in the above chromatograms are confidential and may represent internal studies or other test samples not related to #2.  
**This report applies to the sample investigated and is not necessarily indicative of the quality or condition of apparently identical or similar products. This report is for the exclusive use of the party who requested the report and not for public dissemination or use by third parties, including for promotional purposes, without the prior written permission of Alkemists Pharmaceuticals, Inc. This report provides technical results for a specific sample and the report shall not be altered, modified, supplemented or abstracted in any manner. Any violation of these conditions renders the report and its results void. © 2010 Alkemists Pharmaceuticals, Inc. All Rights Reserved**